



BOYS & GIRLS CLUBS  
OF GREATER KANSAS CITY

Great Places for Great Kids.

Learn. Care. Act.

**BE GREAT.**

[www.helpKCkids.org](http://www.helpKCkids.org)



**BE A HIGH SCHOOL GRADUATE**

with post-secondary educational plans.

Learn. Care. Act.

**BE GREAT.**


Today's young people need our help. Too many children and teens are not receiving the guidance they need to graduate from high school, to avoid the effects of violence, gangs and drugs or to become responsible adults. The statistics on high school dropout rates, obesity and violence among youth are staggering.

Each of us can play a vital role in helping young people overcome these obstacles and achieve their dreams no matter what their circumstance.

At Boys & Girls Clubs, we believe every child has the potential to **BE GREAT**. In support of this strong conviction, the Clubs strive to build caring, responsible citizens. The Boys & Girls Club family – a community of staff, volunteers, parents, youth and supporters – work together to create a positive place, full of hope and opportunity, for every child.

“Boys & Girls Clubs are the true prep schools for the citizenship of life.”

— Bernard Shaw, former CNN principle anchor and Club alumnus



Be smart. Successful. Incredible. Amazing.  
Be inspired. Be an inspiration. Be more.  
Be a leader. Be a difference-maker.  
Be a star. Be a good person. Be kind.  
Be generous. Be the change.  
Be happy. Believe. Belong.  
Be fit. Be an achiever. Be the most.  
Be a graduate. Be responsible. Be it.  
Be courageous. Be the best. Be a friend.

**Be the answer.**

## Our Membership Card Saves Lives:

- In 2008, the Clubs served over 6,100 youth members
- It costs the Clubs approximately \$2,397 to keep a kid in the Club for one year – yet the Clubs charge youth only \$15 per school year to be members
- 31% of youth served by the Clubs are ages 13-18
- The average Club member spends ten hours each week in the Club – 520 hours over the course of the school year
- The combined average household income within a 2 mile radius of our five community Club sites is \$21,729
- 80% of Club youth live in single-parent homes

Our young people need our support. Boys & Girls Clubs provide a safe place for youth to get help with homework and learn how to resist peer pressure and negative influences on their lives. The Clubs offer a respite from daily pressures and a fun place to meet friends.

Help the Boys & Girls Clubs provide this needed support by being an active advocate for youth.

**Mentor a child. Volunteer at a Club. Provide financial resources. Together, we can give young people a chance to succeed.**

# who we are



“The Club is where I looked for hope, purpose and direction. That’s where I learned to dream—and to think big.”

— Denzel Washington, *Academy Award-winning actor and Club alumnus*

The Boys & Girls Clubs of Greater Kansas City

is the best at *inspiring OUR children and youth to live out their greatest dreams.*

In every community, boys and girls are left to find their own recreation and companionship in the streets. An increasing number of children are at home with no adult care or supervision. Young people need to know that someone cares about them.

The Boys & Girls Clubs offer that and more. Club programs and services promote and enhance the development of boys and girls by instilling a sense of competence, usefulness, belonging and influence.

The Clubs strive to enable all young people, especially those who need us most, to reach their full potential as productive, caring, responsible citizens. Caring Club staff are there for kids to help with homework, to give them new opportunities through stimulating academic programs, and to open doors for youthful aspirations.

Boys & Girls Clubs are a safe place to learn and grow – all while having fun. They are truly “Great Places for Great Kids.”

## By the numbers . . .

1

Ranking among ALL youth organizations in the Chronicle of Philanthropy’s “Philanthropy 400” report for the 15th consecutive year

57

Percent of alumni who said the Club saved their life (from the 2007 Harris Survey of Club Alumni)

77

Cents out of every dollar donated that goes directly to youth programming

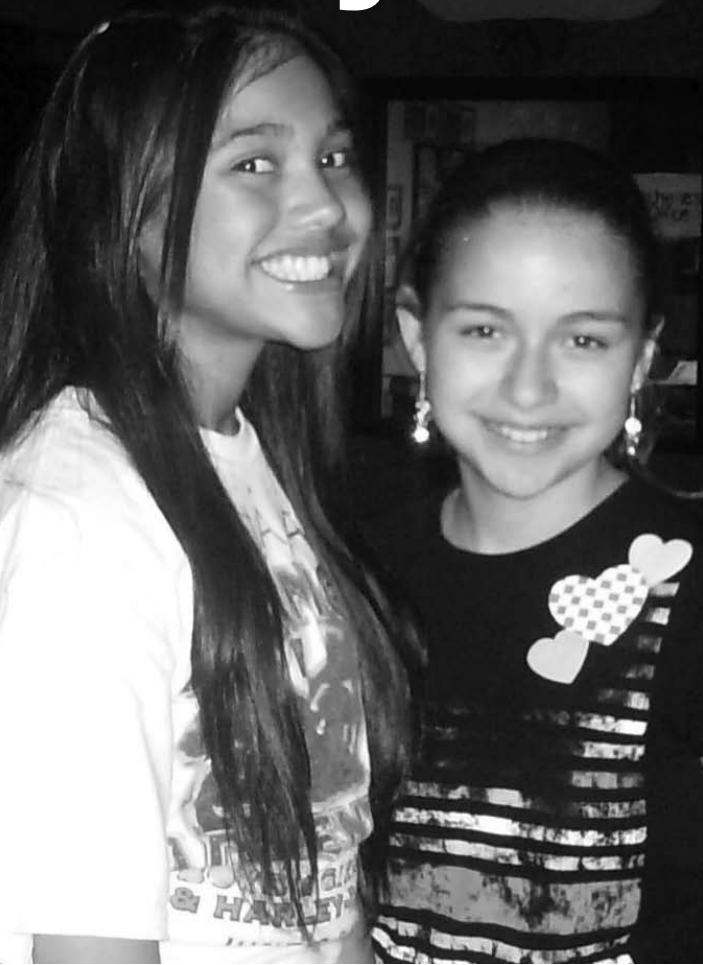
2,397

Cost (in dollars) to take care of a kid in the Boys & Girls Clubs for a year

70,000

Approximate cost (in dollars) to incarcerate a juvenile offender for a year

# why we're special



There are four key characteristics that differentiate the Boys & Girls Clubs from other youth-serving organizations. All are critical in exerting positive impact on the life of a child:

**Dedicated Youth Facilities** The Boys & Girls Club is a place - an actual neighborhood-based building - designed solely for youth programming and activities.

**Open When School is Not** The Clubs are open Monday-Friday, with some Saturday programming. On school-out days (even snow days) and most holidays, the Clubs are open when youth have free time and need positive, productive outlets.

**Professional Staff** Every Club has full-time trained youth development professionals, providing positive role models and mentors. Volunteers provide key supplementary support.

**Affordable and Available to All Youth** Clubs reach out to youth who cannot afford, or may lack access to, other community programs. Dues are low - the annual membership fee is only \$15 per school year.

## Member Demographics

African American - 79%  
Caucasian - 13%  
Hispanic - 3%  
Multi-Racial/Other - 5%

## Gender

66% male  
34% female

Youth from single-parent homes 80%

Youth who qualify for free or reduced-price school lunch 87%

## Age Breakdown of Members

Ages 5-9 42%  
Ages 10-12 27%  
Ages 13-15 19%  
Ages 16-18 12%

51%

Percentage of members who have been members for more than 2 years.

24,825

Total number of youth served in 2008

(youth who USED the Clubs in 2008, whether members or other youth)

**No one else** in Kansas City besides the Boys & Girls Clubs is doing affordable youth programming located in the toughest neighborhoods across our urban core.



Without the Boys & Girls Clubs  
of Greater Kansas City

**24,825**

children and youth would miss out  
on life-changing opportunities.

# Be involved.

## The Programs

The Boys & Girls Clubs has a lineup of tested and proven nationally recognized and locally developed programs that address today's most pressing youth issues, teaching young people the skills they need to succeed in life.

“ I had some of the best times  
of my life there. I'm a product  
of the Clubs. ”

— Reuben Studdard

*American Idol and Club alumnus*

**Character & Leadership** Helping youth become responsible, caring citizens and acquire skills for participating in the democratic process is the main thrust of these programs. Programs such as *Keystone Clubs* and *Youth of the Year* help youth develop leadership skills and provide opportunities for planning, decision-making, and contributing to Club and community.

**Education, Career & Technology** Programs like *Money Matters*, *Project Learn*, *Power Hour* and *Goals for Graduation*, help youth create aspirations for the future, providing opportunities for exploration and educational enhancement.

**Health & Life Skills** Initiatives such as *NetSmartz* (internet safety), *SMART Moves* and *Passport to Manhood*, help youth achieve and maintain healthy, active lifestyles.

**The Arts** These initiatives, including *Digital Arts Festivals*, *ImageMakers: National Photography Program* and *National Fine Arts Exhibit* help young people enhance self-expression and creativity, develop multicultural appreciation, and provide exposure to and develop skills in crafts and visual, performing and literary arts.

**Sports, Fitness & Recreation** These Club programs, like *Triple Play, Jr. NBA/WNBA*, and *Reviving Baseball in the Inner City (RBI)*, help develop fitness, positive use of leisure time, reduction of stress, appreciation for the environment, and social and interpersonal skills.

# Be inspiring.



## Inspiring a Generation

Every day Boys & Girls Clubs inspire our members. Whether encouraging young people to complete their homework, play sports or recreational activities, enter an art competition or have a healthy snack, Club staff know the important role they play in creating the wholesome environment kids need.

The United States is facing a national crisis with soaring high school drop-out rates, coupled with low fitness and high obesity within our young people. Boys & Girls Clubs are providing solutions to this national epidemic through homework help, engaging and fun nutritional tips, energizing sports and recreational activities and challenging academic programs. Throughout the nation, Clubs are reaching out to a generation at risk by providing positive guidance and exciting opportunities.

## Snapshots of Success – 2008 Outcomes

*(From pre- and post-program surveys in various learning areas in 2008)*

**84%**

of participating youth developed an increased awareness of ethnic diversity and cultural uniqueness

**81%**

showed an increase in computer skills by improving scores on skills tests

**80%**

increased their knowledge of the value of exercise, proper nutrition and a healthy lifestyle

**79%**

increased their knowledge of the importance of leadership and an ethic of service

**78%**

learned more positive ways to resolve conflict non-violently

**78%**

increased their knowledge of the dangers/hazards of alcohol, tobacco and drug use

## Administrative Office

6301 Rockhill Road, Ste 303  
Kansas City, MO 64131  
(816) 361-3600

## East Side Unit

5101 E 24th Street  
Kansas City, MO 64130  
(816) 241-5252

## Hawthorne Unit

16995 Dover Lane  
Independence, MO 64056  
(816) 257-7010

## Leslie Unit

315 S Leslie  
Independence, MO 64050  
(816) 461-1422

## John Thornberry Unit

3831 E 43rd Street  
Kansas City, MO 64130  
(816) 861-6300

## Wyandotte County Unit

1240 Troup  
Kansas City, KS 66102  
(913) 621-3260

# want to help?



**Digital cameras**

**Televisions**

**DVD players**

**Board games**

**Video game systems:** Xbox, Wii, Playstation, etc.

**Exercise equipment**

**Like-new furniture**

**Ping pong tables**

**Pool tables**

**Fish tanks**

**Gift cards:** Blockbuster, movie theaters, restaurants, etc.

**Arts and crafts supplies:** especially colored and construction paper

This list includes just a few of the many items currently needed at the Clubs. For a more extensive listing of Club Wish List needs, visit our newly redesigned web site at [www.helpKCKids.org](http://www.helpKCKids.org). Our in-kind contributors help us by providing budget relieving items – and giving more impact to the funding we receive.

If you have any items you would like to donate or if you would like to inquire about purchasing any of our wish list items, please contact the In-Kind Donation Coordinator at (816) 361-3600 or [giving@helpKCKids.org](mailto:giving@helpKCKids.org).



## All Level 2008 Donors

*(\*) An asterisk signifies members of the President's Circle.*

### Benefactors Society\*

#### \$25,000 and Above Donors

Alcatel-Lucent Technologies  
The Allstate Foundation  
American Century Companies Foundation  
Boys & Girls Clubs of America  
Breidenthal Foundation  
Cisco  
Citigroup Business Services  
City of Independence, Missouri  
Louetta M. Cowden Foundation  
Mason L. Dean Trust  
DST Systems, Inc.  
J.E. Dunn Construction Group, Inc.  
EMBARQ  
Faultless Starch-Bon Ami Company  
Robert Firmhaber and Sally Groves  
General Mills Foundation  
The Goppert Foundation  
William T. & Frances Grant Foundation  
Sharon and Don Greenwood  
Hall Family Foundation  
Harley-Davidson Motor Co.  
Health Care Foundation of Greater Kansas City  
Hickman Mills C-1 School District  
Humphrey, Farrington & McClain, P.C.  
Jackson County, Missouri Department of Finance  
Kansas City Power & Light  
Kansas City University of Medicine and Biosciences  
Ewing Kauffman Fund for Greater Kansas City  
Muriel McBrien Kauffman Foundation  
William T. Kemper Foundation  
Preservation of Affordable Housing Inc.  
Royals Charities  
The Sosland Foundation  
Victor E. Speas Foundation  
Sprint Corporation  
Sprint Foundation  
State of Missouri Department of Mental Health  
State Street  
The Sunderland Foundation  
Jill and Thomas Turner, III  
United States Olympic Committee  
United Way of Greater Kansas City  
Jean and Don Wagner  
YRC Worldwide Inc.

### Club Patrons\*

#### \$10,000 - \$24,999 Donors

Blue Cross and Blue Shield of Kansas City  
Boys & Girls Clubs Kansas Alliance

Boys & Girls Clubs Missouri Alliance  
Burns & McDonnell Construction Group  
Carmax Foundation  
Carter Broadcast Group  
CBIZ & Mayer Hoffman McCann P.C.  
Children's Mercy Family Health Partners  
Citigroup Foundation  
CST Industries, Inc.  
Entercom Kansas City  
First Pic Consulting Inc.  
Ford Motor Company  
Fox 4  
Free Country Design & Construction, Inc  
Arvin Gottlieb Charitable Foundation  
Hallmark Cards, Inc.  
Harley Davidson Foundation  
Ellen and Irvine Hockaday, Jr.  
Sharon and John Hoffman  
M.R. & Evelyn Hudson Foundation  
Illusions Unlimited Productions, Inc.  
Carl J. and Margot A. Johnson Foundation  
The Kansas City Star  
Ewing Marion Kauffman Foundation  
KPMG LLP  
Lockton Companies, Inc.  
Major League Baseball Properties, Inc.  
Margolis & Tisman LLP  
Microsoft  
James B. Nutter & Company  
Oppenstein Brothers Foundation  
Antonio Richardson  
Cal Ripken, Sr. Foundation, Inc.  
Karen and John Rose  
The School District of Kansas City, Missouri  
Starbucks Foundation  
State Street Foundation  
Taco Bell Foundation, Inc.  
United Way of Wyandotte County, Inc.

### Club Fellows\*

#### \$5,000 - \$9,999 Donors

AEG Live  
AMC Entertainment  
B.S.C. Holding, Inc.  
Bank Midwest, N.A.  
The Baseball Tomorrow Fund  
Black Community Fund  
Kate and Peter Brown  
Bryan Cave LLP  
Jackie and Andrew Burczyk  
Camps For Kids  
Carrington, Coleman, Sloman & Blumenthal, LLP  
Susan and Michael Chesser  
Citi Cards  
The Coca-Cola Bottling Co. of Mid-America, Inc.  
Collective Brands  
Jill and Marshall Dean, Jr.  
Dean Development Incorporated

Tammy and Larry Dickinson  
Fishnet Security  
The Francis Families Foundation  
GARMIN International, Inc.  
General Mills, Inc.  
Global Impact  
Tony Gonzalez Foundation  
Kay and Jeff Hanes  
Heavy Constructors Association of Greater Kansas City  
Daniel Hesse and Diane Canaday  
JCPenney After School Fund  
Jewish Heritage Foundation of Greater Kansas City  
Kansas City Business Journal  
Kansas City Royals Baseball Club  
Kansas City Southern  
Gayle and Bruce Krigel  
Kuehn Foundation  
Lathrop & Gage, L.C.  
LIFETIME Fitness  
R. A. Long Foundation  
M&I Bank  
Mariner Wealth Advisors  
MarketSphere Consulting, LLC  
McCown Gordon Construction, LLC  
Milbank, Tweed, Hadley & McCloy LLP  
Modern Woodmen of America  
Dale Moorman  
Niemuth Design  
Roshann Parris and Jeff Dobbs  
Margaret and Keith Pence  
The Pentair Foundation  
Polsinelli Shughart PC  
Mary and Ron Pressman  
The Procter & Gamble Manufacturing Company  
J.B. Reynolds Foundation  
Victor E. and Carolyn E. Schutte Foundation  
Servicemaster  
Vivian & Hymie J. Sosland Charitable Trust  
Stinson Morrison Hecker LLP  
Scott Tanguay  
Torosian Foundation  
UMB Bank, n.a. Kansas City  
Unified Government of Wyandotte County  
The Don and Jean Wagner Charitable Foundation  
Henry Wurst Incorporated

### Club Sponsors

#### \$2,500 - 4,999 Donors

360 Architecture  
Accenture  
Allied Construction Services, Inc.  
Andrews McMeel Universal Foundation  
Anonymous  
Anonymous  
Apollo Group, Inc.  
Aquila, Inc.

Mary and Alan Atterbury  
Avatar Inc.  
B.A. Karbank & Co. LLP  
The George K. Baum Foundation  
Nancy and Gordon Beaham, III  
Big Shot Interactive Integrated Marketing  
Rita and Irwin Blatt  
Block & Co., Inc. Realtors  
Butler Manufacturing Company  
Capitol Federal Foundation  
The Joseph & Diana Carter Foundation Charitable Trust  
Cerner Corporation  
Children's Mercy Hospital  
Colormark, Inc.  
Commerce Bank, N.A.  
Controlled Environment Products, Inc.  
Cooling & Herbers, P.C. Attorneys-At-Law  
Country Club Bank  
Cloud L. Cray Foundation  
Kathleen and Jon Cromer  
Daniel Cunliffe  
Ellen and Doug Dalzell  
DeBruce Companies  
Denver Ticket Company  
Denise and Mark Dudenhoefter  
EDS  
Anne and Howard Elsberry  
Enterprise Leasing Company of Kansas  
Ernst & Young LLP  
Executive Hills, Inc.  
Lezlie and Carl Falcone  
Fleishman-Hillard, Inc.  
Sherry and Gary Forsee  
Samuel C. Freitag  
Global Prairie  
Grandbridge Real Estate Capital, LLC  
Janie and Thomas Grant  
The Greater Kansas City Community Foundation  
Dana and Jason Grimsley  
James Grube  
H&R Block, Inc.  
Joyce and Jack Hayhow  
Heartland Combined Federal Campaign  
Judy and James Heeter  
Herman Family Foundation  
Laura and August Huber, III  
Bethany and Trey Humphrey  
Husch Blackwell Sanders LLP  
The Image Group/Scott Robben  
Johnson County Pediatrics  
Jones Development Company, L.L.C.  
Kansas City Home Care, Inc.  
Kansas City, Missouri Parks & Recreation  
Kingston Environmental Services  
Kissick Construction Co., Inc.  
Law Offices of Krigel & Krigel  
Kuhn & Wittenborn Advertising, Inc.  
Lansing Trade Group, LLC

Lee Jeans  
Meleda and John Lowry  
Liz and Greg Maday  
Major Brands  
Peter Mallouk  
Mazuma Credit Union  
Midwest Consulting Group, Inc.  
Karen and Sean Miller  
Robert E. Miller Insurance Agency  
James R. Mobley  
Negro Leagues Baseball Museum  
Catherine and Charles Newell  
Oddo Development Company, Inc.  
PAL  
Margo and Joe Posnanski  
Premier Manufacturing Support Services, Inc.  
Providence Medical Center  
QC Holdings Companies  
RED Development, LLC  
Jan and Ned Riss  
Loretta Riss  
RLS Illumination Fund  
Lisa and Robert Rohlf  
Roxborough Pomerance & Nye, LLP  
Lynn and Steve Sestak  
Shank & Hamilton  
Shughart Thomson & Kilroy Foundation  
Sioux Chief Manufacturing Co., Inc.  
Michelle and David Smith  
Sonnenschein Nath & Rosenthal  
Staples  
Strickland Construction Company  
John Stuerke  
Sturgeon Electric  
Swope Health Services  
Mary Jean and William Thomas  
Toyota Financial Services  
Toyota Motor Sales, USA, Inc.  
Trabon Printing  
Truman Medical Centers Charitable Foundation  
Turner Family Foundation  
UBS Financial Services  
Union Pacific Railroad  
Unity  
University of Missouri Kansas City  
Tammie Wahaus  
Toma and Andrew Wolff  
Wood Family Fund  
Elizabeth and Doc Worley  
Yard House

### Club Partners

#### \$1,000 - 2,999 Donors

4 Hats Creative  
Dena and John Adams  
Air Tran Airways  
David Alpert  
American Jazz Museum  
Area Rug Dimensions

Armstrong Teasdale LLP  
Artcraft Printing Co.  
Atwood & Palmer, Inc.  
Babies R Us  
Debby and Gary Ballard  
Balls Price Chopper Super Food  
Leslie and Jeb Bayer, Jr.  
Grant Bendas  
Ira and Florita M. Brady Foundation  
Jeanette and Richard Brown  
Carole and Terry Brummer  
Bonnie and Herb Buchbinder  
Diana and Joe Carter  
Darcy and Byron Clymer  
Commerce Bancshares Foundation  
Cosentino's Brookside Market  
Erika and David Dickey  
Dick's Sporting Goods, Inc.  
Enterprise Rent-A-Car Foundation  
Feld Entertainment  
Fidelity Security Life Insurance Co.  
Fike Corporation  
Footprints Foundation  
Mitzi and Mark Foster  
FRANMAC, The Association of Taco Bell Franchisees  
William and Laura Frick Foundation  
JoAnne and Daniel Gabbert  
Derek Gamble  
Gilmore & Bell, P.C.  
Giltner & Sons, LLC  
Nancy and Rick Green, Jr.  
Laura Greenbaum  
Marilyn and Kenneth Hager  
Adele and Don Hall  
Carol and Allan Hallquist  
Shirley and Barnett Helzberg Foundation  
Bush and Jamie Helzberg Fund  
Karen and Michael Herman  
Hudson & Jane  
Hyatt Regency Crown Center  
Jasper's Restaurant  
JMW  
Dianna and Harrel Johnson  
Victoria and Mike Kanaley  
Kansas City Chiefs Football Club  
Keller & Owens  
Cherie and Christopher Kramer  
Mark Lambertz  
Olive Beaham Lansburgh and Larry Lansburgh  
Leadership Advocates Network  
Les Bourgeois Vineyards  
Joyce and Jack Letts  
Michael Lewis  
Liberty Fruit Company Inc.  
Lon Lane's Inspired Occasions  
The Historic Loose Mansion  
Magic Touch Cleaning, Inc.  
Thomas D. Mangelsen Inc./ Images of Nature

|   |  |   |  |                                       |   |
|---|--|---|--|---------------------------------------|---|
| Barbara Hall Marshall                               | Wal-Mart Foundation                      | James R. Gulick                             | Roberts Dairy  | Alternative Marketing Solutions       | Michelle and Jeff Carlstedt                 |
| Mary Elizabeth Martin Scholarship Trust             | Kim and Mal Warrick                      | Guts Church, Inc.                           | Chuck Robinson                                       | Mithra Amaran                         | LeAnn Cariton                               |
| Caroline and John McCallister                       | Water & Light Credit Union               | Carlene and Bill Hall                       | Jack D. Rowe   | Ambience Furs                         | Jane Casburn                                |
| McCormick & Schmick's Seafood Restaurant            | Linda T. Watson Family Foundation        | Jill and Don Hall, Jr.                      | Melissa and Matthew Rubel                            | America's Charities                   | Amy J. Caulk                                |
| McDaniel Hazley Group, Inc                          | Cindy Weiner                             | Paula and Casey Halsey                      | Michelle L. Ruffin                                   | Lois and Gerry Anderson               | Jenny Caulk                                 |
| Judi and Thomas McEvoy                              | Helen and Frank Wewers                   | Marquita and William Hancock                | Caroline and Daniel Saferstein                       | Argosy Casino                         | The Dess L. Caylor Charitable Trust         |
| Tom Meier   | Gerald White and Cyprienne Simchowiz     | Harold Pene's Man of Fashion                | Sanders Management, Inc.                             | Armani Exchange                       | Centerplate                                 |
| The Midwest Trust Company                           | Willard Family Foundation                | Hartley Family Foundation                   | Amber and Jay Seaton                                 | Jerry Ash                             | Centers for Athletic Performance            |
| Morgan Family Foundation                            | Joseph Willerth                          | Sylvia and Mike Haverty                     | Servant Christian Community Foundation               | Assured Management                    | Central Bank of Kansas City                 |
| Muchnic Foundation, Inc.                            | Worlds of Fun                            | Lew Herman                                  | Sheraton Overland Park                               | Carolee and Russell Atha, Jr.         | Chase Suites Hotel                          |
| Sherrill Anne Mulhern                               |  | Sue and Michael Higgins                     | Sheraton Hotel/ Coco Key Water Resort                | Martha Atlas                          | Maggi and Paul Choplin                      |
| Multi Service                                       | <b>Club Advocates</b>                    | HMC Enterprise Corp.                        | Bob Sight Ford, Inc.                                 | Kimberly E. Ayers                     | Elizabeth and Todd Cione                    |
| Pat Murphy  | <b>\$500 - \$999 Donors</b>              | Hollywood Sound & Lights                    | Sisters Of Charity Of Leavenworth                    | Back Yard Burgers                     | City of Kansas City, Missouri               |
| Amy and Mike Naatz                                  | Sheila and Vincent Abio                  | Independence Noland Road Lions Club         | Health System  | Jennifer and Jerry Bain               | Jamie Clark                                 |
| Nichols Company Charitable Trust                    | Jerry Adriano                            | Mary Lou Jacoby                             | Becky and Phillip Smith                              | Mila Banks                            | Sharon Coberly                              |
| Terri and Bill Norton                               | ADW Solutions, LLS                       | Marilyn Jurden                              | Edward A. and Beth K. Smith                          | DeNeese Barclay                       | Cockerell & McIntosh Pediatrics, PC         |
| Office of the City Manager                          | AEG Kansas City                          | Jill and James Kanatzar                     | Philanthropic Fund                                   | Robert M. Barnes                      | Barbara and Sanford Cohn                    |
| Park Foundation                                     | Alaskan Fur Company                      | Brandon Kane                                | J.M. Smucker Company                                 | Denny Barnett                         | Dot Coleman                                 |
| Parris Communications Inc.                          | Alexander Open Systems                   | The Kansas City Wizards                     | Southwest Airlines                                   | Robert Beachy                         | Arthur Collins, Jr.                         |
| Vallerie Parrish-Porter                             | AM Investments                           | Kansas City, Kansas Community College       | Gloria and Glenn Spencer                             | Scott Beall, Jr.                      | ComedyCity                                  |
| Party Personnel                                     | American Airlines                        | Kansas Gas Service                          | SPIN Neapolitan Pizza                                | Albert Bean, Jr.                      | Concordia Tractor, Inc.                     |
| Peterson Manufacturing Company                      | David Ammon                              | Jason D. Karlin                             | Sports Radio 610 AM                                  | Beauty Brands                         | Ann and William Cook                        |
| Pi Kappa Alpha Fraternity Kappa                     | ARMtech Insurance Services               | Julia Irene Kauffman                        | Sports Radio 810 WHB                                 | Roy Ben-Aharon                        | Martha and Mark Cornwall                    |
| Epsilon Chapter                                     | Toi and George Ashby                     | John Kurtz                                  | Mary and Charles Stitt                               | Berbiglia Wine & Spirits              | Bob and Joy Cottrell Family Charitable Fund |
| Elaine & Norman Polsky Donor Advised Fund           | Jared M. Barber                          | Jennifer and Chuck Laue                     | Strauss Peyton Portraiture                           | Merilyn and Loren Berenbom            | Fred N. Coulson, III                        |
| Cappy and Peter Powell                              | Julie Blau                               | Leavcon II, Inc. Concrete Construction      | Lisa Strawn-Adams                                    | Eliot Berkley                         | Tara and Craig Cowden                       |
| Bonnie and Mark Prasifka                            | Blue Ridge Bank & Trust Co.              | Lewis, Rice & Fingersh                      | Jo and John Stueve                                   | Kathleen and James Betterman          | Robert Cox                                  |
| Katie and Rob Quirarte                              | Blue River Elementary School             | Lewis Block & Supply Company                | Jean and Rick Summers                                | Ruth Bigus                            | Cozad Company LLC                           |
| R & H Properties                                    | Board of Public Utilities                | Lidia's/Cody Hogan                          | The Sunflower Foundation                             | Lucie and Don Black                   | Ben Craig, Jr.                              |
| RBI Rookie Division                                 | Boulevard Brewing Co.                    | Loch Lloyd                                  | Tank's Tavern  | Theresa and William Black             | Crate & Barrel                              |
| Mary and Stephen Reintjes                           | Lynne and Peter Brown                    | Candis and Mike Lochmann                    | Tom James of Kansas City                             | Curtis Bliss                          | Victoria A. Cundiff                         |
| Victoria and William Reisler                        | Rebecca and John K. Brungardt            | Tony Marengo                                | Union District Association                           | Blue Springs Harley-Davidson          | D.E.L.L. Plaster & Drywall Constr. Inc.     |
| Janet and Tom Renich                                | Kathryn and Gary Bussing                 | Marks Nelson Vohland Campbell & Radetic LLC | United Way Campaign IBM Employee Giving              | Terri and Jack Bonar                  | Carolyn Davis                               |
| Cheryl and Joseph Rizk                              | Kay and John Callison                    | Master Pitching Machine Inc.                | United Way of Greater Los Angeles                    | Bonefish Grill                        | Sylvester Davis                             |
| Janice and Jim Rose                                 | Brenda and Walter Calvin                 | Sandra and Albert Mauro                     | University of Kansas Athletic Department             | Susan and Douglas Borge               | Reginald Davis                              |
| Royals Radio Network                                | Irene Caudillo                           | Men's Wearhouse                             | Susan and Chris Wally                                | Peggy and Mike Borkon                 | Louise and Woody Davis                      |
| Seigfreid, Bingham, Levy, Selzer & Gee              | Churchill                                | Merrill Lynch                               | Christine S. Watts                                   | James Boughan                         | Denise and Donald Decelles                  |
| Sellers & Marquis Roofing Company                   | Barbara and Barkley Clark                | Westwind Airlines                           | WGBH Educational Foundation                          | Berna and Dave Bourgoin               | Jeanette and Paul Delaune                   |
| Carol and R. Brooks Sherman                         | Michael Clooney                          | Lisa Monroe                                 | Winkler's Diamonds                                   | Stephanie Bradley                     | Design Resources, Inc.                      |
| Linda and Gregory Smart                             | Wilma Collado and Jim Walsh              | Tina and Jeff Montgomery                    | Lana Rainen Yunker                                   | Tammy Brady                           | Carole DeWald                               |
| David A. Smith                                      | Copaken Family Foundation                | The National II                             | Brenda and Albert Zaragoza                           | Jeanene and Jim Brake                 | Robert Dinsdale                             |
| Blake Smith   | The Louis and Dorothy Cumonow Foundation | Nigro Brothers Western Wear                 | Karen and Mark Zecy                                  | Brand Connections                     | Kathy and David Disney                      |
| Ralph L. Smith Foundation                           | Delta Dental Plan of Kansas              | Barbara and David Odegard                   | Jenni Zorn   | Patrick C. Brennan                    | Kerry and Phil Dixon                        |
| Jack & Martha Steadman Family Charitable Foundation | Dillard's                                | One Plus Printing Services                  | <b>Friends Society</b>                               | Dorothy and Oscar Brewer              | Tommye and John Dodd                        |
| Elaine Feld Stern Charitable Trust                  | Monte Dinkel                             | Anita and Phil Otto                         | <b>\$100 - \$499 Donors</b>                          | Strand Brewer                         | Ann and Richard Dodderidge                  |
| Holly Swyden  | Doherty Ornamental Iron Inc.             | Outpost Worldwide                           | 24 Hour Fitness                                      | Jessica Bridge                        | Raymond Doswell                             |
| Tension Envelope Foundation                         | Dollar Tree                              | Overland Limousine Service                  | A Joy Event Planning, LLC                            | JoAnne and Chris Bridgnell            | Doubletree Hotel                            |
| Teva Neuroscience, Inc.                             | Double N T-Shirts & More                 | Michelle Paige                              | Amanda Acton   | Midge and Bobby Brooks                | Larry Downey                                |
| Tivol, Inc.   | William H. Downey                        | Epic Electric Services Corporation          | Theresa Adair  | Brookside Electrical Project Services | Julie Drew                                  |
| Tower Properties Co.                                | William H. Downey                        | Holly Farkes                                | Ashley Adorante                                      | Douglas S. Brown                      | Jean Dunlap                                 |
| Treat America Food Services                         | Epic Electric Services Corporation       | Randall Ferguson, Jr.                       | Advanced Financial Solutions, LLC                    | Shannon and Kevin Bryant              | Amy Bucher Photographic Artist, Inc.        |
| Trozzolo Communications Group                       | Holly Farkes                             | Karen A. Ferro                              | Advanced Laser Tag                                   | Amy Bucher Photographic Artist, Inc.  | Leola and John Burton                       |
| U.S. Engineering                                    | Randall Ferguson, Jr.                    | First Presbyterian Church of Independence   | Ellen and John Aisenbrey                             | Greg Butell                           | Jeffrey Butts                               |
| University of Missouri Kansas City-Athletics        | Karen A. Ferro                           | Maria and James Fiscella                    | Ben Aken   | Therese M. Bysel                      | There M. Bysel                              |
| Vanguard Charitable Endowment Program               | Sandra and Edward Fried                  | Sandra and Edward Fried                     | Linda R. Aks   | California Closets                    | The Capital Grille                          |
| Patricia Ferazzi and Mike Vessels                   | Frontier Airlines, Inc.                  | John Garcia                                 | All Seasons Party & Tent Rental                      | The Capital Grille                    | Capital Steel Service, LLC                  |
| Vino 100 - Kansas City                              | John Garcia                              | Samella Gates                               | All Star Awards & Ad Specialties                     | Keri and Tony Carbajo                 | Linda Endecott                              |
| Vintage Sports                                      | Wendy and Dean Guillies                  | The Raphael Hotel Group                     | Alpha Kappa Alpha Sorority, Inc./ Beta Omega Chapter |                                       |   |
| VML Foundation                                      |  | RCE Vending                                 |  |                                       |   |
|   |  | The Roasterie, Inc.                         |  |                                       |   |

|                                 |  |  |                               |   |  |
|---------------------------------|--|--|-------------------------------|---|--|
| Jill and Galen Erickson         | Haven Center, Inc.                                 | Sue and Loren Laird                          | Joseph M. Nuzum               | Alma and Marvin Rollison                          | Sean R. Tyler                                      |
| George Euber                    | Hawthorne Place                                    | Acey Lampe                                   | Edward Opstein                | Julie and Mark Rome                               | UGG Australia                                      |
| Brandon Fergerson               | Lauren E. Hays                                     | Jeffrey T. Larison                           | Jan and Tom O'Rourke          | Claude Roper, Jr.                                 | Unicorn Theatre                                    |
| The Fiddly Fig Legg Florist     | Janis and Curt Heinz                               | Natalie Smart Larrabee                       | Julie O'Rourke                | Gerald D. Rose                                    | United States Secret Service                       |
| Debora Field and David Orlowski | Serri and Steven Helm                              | Danuta Oktawiec Larson                       | Joe Orth                      | Leslie and Bren Rose                              | United Way AT&T Employee Giving Campaign           |
| Loretta and John Fierro         | Brian Hensel Consulting                            | John Lathrop                                 | Outlaw Cigar Co.              | Roses Only Brand Roses                            | United Way of Central and Northeastern Connecticut |
| First Federal Bank              | Betty Henson                                       | Lisa and Paul Lattan                         | Overland Park Marriott        | Christina and Jason Roth                          |  |
| Michael Fisher                  | Lisa Hill  | Jo Janet and Jack Lausterer                  | Janice E. Owens               | Doris and Robin Royals                            | United Way of Douglas County                       |
| Fitness Together                | Hilton President Hotel                             | David Lea Training, LLC                      | P.F. Chang's China Bistro     | Patricia and John Russell                         | United Way of Leavenworth County, Inc.             |
| Scott Fitzgerald                | Claire and Francis Hogarty                         | Brooklyn and Jax Leal                        | Kevin Packingham              | Ellen and Alvin Samuel                            | United Way of Ventura County                       |
| Carol and Donald Fletcher       | Holiday Inn Hotel & Suites                         | Keith Leathers                               | Janell L. Pallanich           | Brian Sandridge                                   | Universal Pictures Marketing                       |
| Peggy and Ronald Fletcher       | Jerry Hood   | Leawood Fine Art                             | Panther Pride Boosters Club   | Tracy Satterfield                                 | Susan M. Uppman                                    |
| Arturo Flores                   | Jennifer and Shawn Hopkins                         | Donnie Lecoque                               | Par Exsalonce Salon & Spa     | Mary and Gary Schanzer                            | Urban Community Leadership Academy                 |
| Amy and John Foley              | Roberta and Lee Huddleston                         | Ron Lentz                                    | Shere Parker                  | Susan and Charles Schmelzer, III                  | Heidi Vandawalker                                  |
| Michele and Dennis Ford         | Katherine and Steven Hughes                        | Patricia and Mark Lester                     | Marsha and Jan Parkinson      | Scott Fitness                                     | Nancy Vaught                                       |
| Dave Forscund                   | David Hughes, Sr.                                  | Suzi Aron and Joseph Levin                   | Cindy Parres                  | Kevin Shatzkamer                                  | Kim and J. Verhoeven                               |
| Stephen Forsyth                 | Jamie Hurt   | Lexxi's Hair Salon                           | Preetta Patel                 | George J. Shaw Construction Co.                   | Patricia and John Vertrees                         |
| Charlyn and Vernon Fries        | Ice Midwest  | Irena A. Lloyd                               | Janet Patrick                 | Sheridan Sechter & Associates                     | Aimee Vessel                                       |
| Courtney Fuchs                  | The Improv Comedy Club                             | Locke Equipment Sales Co., Inc.              | Pamela and John Peck          | Will Shields                                      | Michael Volk                                       |
| Full Employment Council, Inc.   | Ingenuity Salon                                    | Christina Lomas                              | John Pecorella                | Shoe Girl Designs                                 | Geraldine Wade                                     |
| Gail and Hires Gage             | Irish Crystal Company                              | Rodney Longhofer                             | Don Peete, Jr.                | Shop Beautiful                                    | Kathy and Fred Walters                             |
| Babu Ganesh                     | Elizabeth and Bernard Jacquinot                    | Leonard R. Louis                             | Pamela and Charles Peffer     | Sigma Gamma Rho Sorority, Inc./ Psi Sigma Chapter | James Warren                                       |
| Everett Gardner                 | Ronald E. Jennings                                 | Lynn Elliott Co. KC                          | Kristie Peppenhorst           | Silpada Designs Jewelry                           | Waterway Carwash                                   |
| Brandon Gentry                  | Ann and Brad Jerome                                | Peggy and Bill Lyons                         | Tim Perry                     | Bette Silver                                      | Rebecca and Vincent Watson                         |
| Ann and Douglas Ghertner        | Jerry's Sport Shop                                 | Mad Jacks on Troost                          | Peter's Clothiers             | Leslie V. Siskey                                  | Catherine Wear                                     |
| Patty and Mark Gilgus           | Jerusalem Cafe and Bakery                          | Alfie A. Mahmoud                             | Lyn and Soren Petro           | Marjorie and Barry Skikne                         | Jane and Claude Webb                               |
| Stephanie and James Gillham     | Jewish Community Foundation of Greater Kansas City | Maid in Kansas City                          | John Pierson, Jr.             | Angela Skinner                                    | Beth and Michael Weishaar                          |
| Kimberly Gilmore                | Amanda E. Jirak                                    | Mancuso Construction                         | Karen Pinks                   | Skymart Inc.                                      | Wellness Consumer Builders                         |
| Dub Giltner                     | Harriett and Larry Johnson                         | Deborah Manley                               | Janet and Kevin Pistilli      | Brenda and Scott Slabotsky                        | Western Fireproofing Company of Kansas, Inc.       |
| Rob Givens                      | Linda and Topper Johntz                            | John D. McAnulty                             | Gloria and Nick Pizzichino    | Jean Sloboda                                      | Westport Flea Market                               |
| Betsy and Brian Glick           | Joy and Russell Jones                              | Angela and Roger McCoy                       | Pleasant Green Baptist Church | Beth Smith  | Mary and Richard Wetzell                           |
| Richard J. Goede                | Joslin's Jewelry                                   | Christine and Steve McDaniel                 | Kim Poteet                    | Wilber Spalding                                   | Teresa and Frank White, Jr.                        |
| Geraldine and Stanley Goldberg  | Amy and Jeff Jurgensmeyer                          | John McGee                                   | Henry Powell                  | Sports Image Group Legends Photography            | Anne and Keith Wiedeneller                         |
| Carol and Bill Golden           | Michele and Lee Kaiser                             | Martha Jane and Ted McGrade                  | Premier Bank                  | Anthony L. Springfield                            | Brian Wiethorn                                     |
| Sara and Scott Goldstein        | Betti and William Kalahurka                        | McNearney & Associates, LLC.                 | Sandra Price                  | Robbie and Randy Springs                          | Jason Williby                                      |
| Felicia Gonzales                | Lisa and Thomas Kane                               | Jean and Brendan McPherson                   | PRP International             | Judy and Harlan Stamper                           | Gwendolyn and Timothy Wills, Jr.                   |
| Patricia and Dave Goodwin       | Kansas City Ballet                                 | Jon Miklos                                   | Carrie and Kent Putman        | Susan Stanton                                     | Willie Wilson                                      |
| Rosemary Gordon                 | Kansas City Library                                | Lou Ann and John Millard                     | Deborah and Jeff Quast        | Starker's Reserve Restaurant                      | Mark Winiarski                                     |
| Andrew W. Gray                  | Kansas City Repertory Theatre                      | Milton Moore School                          | R.J. Dutton, Incorporated     | Robert E. Stephens                                | Cati Winkel  |
| Samantha and Michael Greene     | Kansas City Symphony                               | Mission Bowl                                 | Jane Raddiffe                 | Ann and Edward Stevens                            | Kimberly and Phil Witt                             |
| The Greensman, Inc.             | Kansas City Valve & Fitting Company                | Mission Hills Country Club                   | Rainbow Car Wash              | Ronald Stevenson                                  | Van Wolbach  |
| Marsha Greenwell                | Joy and Jerry Kaplan                               | Kerry and James Moloney                      | Jessica and Matthew Ralston   | Jackie Stowell                                    | David Wolf   |
| Sharon Greenwood                | Ryan Keller  | Marian and James Monnig                      | Jan and John Randle           | Jeannine Strandjord                               | Kathy and Tony Woltjen                             |
| Randy Griffin                   | Joyce and Frank Kemp, Jr.                          | Karen and Olen Monsees                       | Catherine Ray                 | Superlatives                                      | Wonderscope Children's Museum of Kansas City       |
| Carol and Michael Grimaldi      | Nichole Kennedy                                    | Angela and Floyd Montgomery                  | Ann and John Readey, III      | Rhonda and Mark Swade                             | Linda and Peter Woodsma                            |
| Steve Gustafson                 | Ann and Lynn Kindred                               | Wendell K. Moore                             | Karen and David Redlich       | Linda and Thomas Talbott                          | Nancy Yedlin                                       |
| Susie Haake                     | Carla A. King                                      | Ann and Lynn Kindred                         | Michael Reher                 | William Taylor                                    | Vernell Young                                      |
| Abby and Steve Haden            | Joan and Thomas King                               | Morton's of Chicago                          | Leisa and Ralph Reid          | Heather and Anthony Thill                         | Your Wellness Connection                           |
| Jeff Hagar                      | Renea and Chad Kirby                               | Jay L. Moses                                 | Ryan Reid                     | Eden and David Thorne                             | Melanie Zeigler and Terry Lottie                   |
| Jennifer Haile                  | Julia L. Klaas                                     | Frances and Don Motley, Sr.                  | Darcie Reifschneider          | Sharon Thum                                       | Bob Zeldin   |
| Barton Hakan                    | Patricia and Michael Kleinman                      | Mt. Pleasant Freedom School                  | Clay Remley                   | Julie and Tony Thurman                            |  |
| Innes and John Hale             | Lisa and Todd Kobayashi                            | Daphne Nan Muchnic                           | Marilyn Rinker                | Ticket Solutions                                  |  |
| Bonnie M. Halley                | Bill Koenigsdorf and Kay Johnson                   | Steve Munchleton                             | John D. Rios                  | Debra Tickle                                      |  |
| Hallmark Corporate Foundation   | Kohl's Department Store                            | Natural Accents Distinctive Outdoor Lighting | Miranda Ritter                | Tiffany Greens Golf Club                          |  |
| Halls Plaza                     | John Kowalski                                      | The Nelson-Atkins Museum of Art              | Julie and Randy Robinson      | Timex Corporation                                 |  |
| Brenda G. Hamilton              | Andrea and Joel Krasnow                            | Jeannette Nichols                            | Rockhill Tennis Club          | Toner Jewelry                                     |  |
| Erik Hansey                     | Janice and Thomas Kreamer                          | Kenneth Nicolay                              | Craig E. Rodgers              | Too Cool T-Shirt Quilts                           |  |
| Fay and Carter Harrison, Jr.    | Susan and Scott Krigel                             | Phyllis and Ronald Nolan                     | Tobi Rogers                   | Town Center Plaza                                 |  |
| The Hartford                    | Helen and Robert Kuttes                            | Leigh and Tyler Nottberg                     | Kathleen and Robert Rogers    | Sally Tranin                                      |  |
| Travis Hatch                    |  | Hal Novicoff                                 | Judith and Stephen Roling     |   |  |

**Club Supporters  
\$99 and Below Donors**

Geoffrey Ackley  
Irene and Steve Adams  
Aixois  
Meghan and Kevin Alderson  
Omarra and Eric Alexander

|  |                                   |   |  |   |   |
|--|-----------------------------------|---|--|---|---|
| Alexandria's Place                         | Denise and Ronald Coppaken        | James T. Huston, Jr.                                  | Jane and Marion Miller                                   | Anna and DeMorris Smith                             | Omarra and Eric Alexander                       |
| American Eagle Outfitters Foundation       | Nancy and Paul Costello           | Jennifer and John Isenberg                            | Sandra and Robert Minnerly                               | Ashley Smith  | All Seasons Party & Tent Rental                 |
| American Legion Auxiliary Unit 622         | The Coterie Theatre               | Stacy Jackson   | Miriam Garvey  | Anderson Smith                                      | AM Investments                                  |
| Applebee's                                 | Kira Crosland                     | Joseph G. Jacobs, III                                 | The Mixx   | Kay and Don Smykowski                               | AMC Entertainment                               |
| Arline Austin                              | Janette and Hal Cross             | Melissa and Jon Jacobs                                | Jeff Moreno  | John Snyder   | American Jazz Museum                            |
| Baby Cakes                                 | Curious Sofa                      | Jaegers Paintball                                     | Mary Morgan  | Mike Sokoloff                                       | Anonymous                                       |
| Bag & Baggage                              | Brett J. Darby                    | Jaegerz Lasertag                                      | Carol and Jeffrey Most                                   | Aquila, Inc.  | Sole Patch Barbershop                           |
| Sarah and Kevin Bailey                     | Linda and John Daugherty          | Jean and Otis James, Jr.                              | Jackie and Charles Muff                                  | Southmoreland on the Plaza                          | Applebee's                                      |
| John P. Baker                              | Dave & Buster's, Inc.             | Johnny's Tavern                                       | Phillip Nash   | Southtown Glass Company                             | Armstrong Teasdale LLP                          |
| Ann and James Balquist                     | Jerry Davis                       | Rick Justis   | The National Agricultural Center & Hall of Fame          | Kenneth Spieckerman                                 | Artcraft Printing Co.                           |
| Bank of Prairie Village                    | Donald Demoney                    | K.C. Hopps, Ltd.                                      | Tim M. Nielson   | Robert Spielberger                                  | Assured Management                              |
| Phyllis Banks                              | Florence DeWitt                   | Ann and Edward Kander                                 | Katherine and Scott O'Keefe                              | St. James Winery                                    | Atwood & Palmer, Inc.                           |
| Bar Natasha                                | Joyce and Gary Dickerson          | Kansas City Kansas African American History Committee | Thelma and Marvin Orlovick                               | James M. and Jane H. Stacy Charitable Fund          | Back Yard Burgers                               |
| Denvil R. Bartley                          | Jill and Lee Driver               | Kansas City T-Bones Baseball Club, LLC                | Peter J. Osborne   | Stanford & Sons Comedy Club                         | Debby and Gary Ballard                          |
| Sheryl Batch                               | Rowena Earle                      | Kansas City Zoo                                       | Joyce and Louis Pack                                     | Starlight Theatre                                   | Bank of Prairie Village                         |
| Lisa Ann and Paul Bates                    | Catherine Eaton                   | Donna and Ward Katz                                   | Kristin Paden  | Statements  | Leslie and Jeb Bayer, Jr.                       |
| Robert Beckers                             | Beverly and Jim Edwards           | Linda and Barry Katz                                  | Paint Glaze & Fire Ceramics & Coffee House               | Ward D. Stauffer                                    | Nancy and Gordon Beaham, III                    |
| Bradley Belt                               | Liza and Ben Edwards              | Family Tree Nursery                                   | Panache Chocolatier                                      | Robert Steinmeyer                                   | Scott Beall, Jr.                                |
| Benjamin & Loss, P.C.                      | Sally and George Feistner         | Ann and John Kenney, III                              | Panera Bread   | Tricia and Paul Stephens                            | Block & Co., Inc. Realtors                      |
| Nancy and Gregory Bentz                    | Edward Fields                     | J. Martin Kerr  | Paradise Park  | Jill Stever   | Blue Cross and Blue Shield of Kansas City       |
| Heather K. Bertone-Kuo                     | Christine D. Flores Yancey        | KK Charles Communications, LLC                        | Robert J. Parson   | Megan Stock   | Terri and Jack Bonar                            |
| Irene Bettinger                            | Flowers by La Flor Shoppee Inc.   | Amanda and Shawn Knaebel                              | Pendleton Enterprise LLC                                 | Style & Grace                                       | Jeffrey A. Boos                                 |
| Michelle Biddsons                          | Folly Theater                     | Mary Helen and George Korbelik                        | Barry Pickens  | Esther and James Sunderland                         | Susan and Douglas Borge                         |
| Sarah K. Binkley                           | Zella and Donald Forsythe         | Eve and Frederick Kramer                              | Pizza Shoppe   | Kristofer L. Swank                                  | James Boughan                                   |
| Brian C. Bloss                             | Katherine and William Foster      | Adam Kujawa   | Barbara and Luke Ponder                                  | Gerald Tangney                                      | Boulevard Brewing Co.                           |
| Emily and Richard Boeshaar                 | G&H Consulting, L.L.C.            | Jim Kuklenski   | Powell Gardens   | Target 1201   | Stephanie Bradley                               |
| Jeffrey A. Boos                            | Rexanne and Ray George            | Marti E. Lamar  | Scott B. Prater  | Laurie Taylor                                       | Dorothy and Oscar Brewer                        |
| Kelly and Dan Boston                       | Patrick Geschwind & Associates    | Lamar's Donuts  | Marilyn Price  | Marilyn and Robert Taylor                           | Bristol Bar & Grille                            |
| Linda and W. A. Breyspraak                 | Jamie R. Giefer                   | Ellen Laner   | Diane Pritchett  | Leeanne M. Taylor                                   | Brookside Electrical Project Services           |
| Phyllis J. Brinkerhoff                     | Diana L. Giles                    | Le Fou Frog   | Pryde's Old Westport                                     | Justina and Donald Thompson                         | Lynne and Peter Brown                           |
| Bristol Bar & Grille                       | Golden Link Rebekah Lodge #677    | Marilyn and Gerald Lee                                | James Psaras   | Toni and John Thornton                              | Carole and Terry Brummer                        |
| Christine and Robert Brower                | Charlotte and Wilbur Goodseal     | Legends at Village West                               | Jacqueline and Roman Puno                                | Ryan Thurlow  | Bryan Cave LLP                                  |
| Ed Brown                                   | Don Gorske                        | Legends 14 Theatre                                    | Tiffany Purinton   | Tivoli Cinemas                                      | Bonnie and Herb Buchbinder                      |
| Amy Browns                                 | Sam Gould                         | Meyer Lerner  | Latrice Purnell  | Natalie and Dennis Toalson                          | Jackie and Andrew Burczyk                       |
| Build-A-Bear Workshop                      | Julie Green                       | Enid and Peter Levi                                   | Yvette Rayos-Hernandez                                   | Tower Dry Cleaners                                  | Jeffrey Butts                                   |
| Wallace Burger                             | Doris Griffith                    | Jean M. Loesch and Tyrone Brown                       | Kristen and John Redford                                 | Harry S. Truman Library & Museum                    | The Capital Grille                              |
| Carl Bussey                                | Hair                              | Lyric Opera of Kansas City                            | Page and Bruce Reed                                      | Union Pacific Fund for Effective Government         | Carrington, Coleman, Sloman & Blumenthal, LLP   |
| Joseph Butler                              | Lisa Hale                         | Janice A. Mackey                                      | George Rishmany  | United Way Campaign Bank of America Employee Giving | The Cashew                                      |
| John Calkins                               | Marie E. Hamilton                 | Mad Jacks   | Margaret and Odell Roberts                               | United Way of Southeastern Pennsylvania             | Amy J. Caulk                                    |
| Jeannine and Shawn Campbell                | Harold's                          | Michelle and William Mahood                           | Charles R. Robinson                                      | Katie Van Luchene                                   | Jenny Caulk                                     |
| The Candy Store                            | Jo-Ann Harris                     | Mary and Robert Malley                                | Cindy Ruester  | Natalie Vizcarra                                    | Centerplate                                     |
| Carrabba's Italian Grill                   | Susan and John Harrison           | Manny's Restaurant                                    | Nancy and Thomas Ruzicka                                 | Shelley R. Walker                                   | Citi Cards                                      |
| The Cashew                                 | Marsha Hawkins                    | John F. Marshall                                      | Marjorie Sackin  | Shelley and Leon Walker                             | Jamie Clark                                     |
| Central High School Mathematics Department | Hemiline Women's Boutique         | Lorene and John Massa                                 | Saint Luke's Health System/ Crittenton Children's Center | Elizabeth A. Watkins                                | Lakeisha Clay                                   |
| Shelley Cesar                              | Julia Henderson                   | Dee Mathews   | Salon Marc   | Westport Land & Management Company                  | Sharon Coberly                                  |
| Janet Chapman                              | Melanie Hepperly                  | Maurices  | Salsman Caterers, Inc.                                   | Roberta Whisonant                                   | The Coca-Cola Bottling Co. of Mid-America, Inc. |
| The Cheesecake Factory                     | Heidi Hessler                     | Ilene and Larry Maxwell                               | Sam's Club   | Barbara and Gary Widmar                             | Colormark, Inc.                                 |
| Chipotle                                   | Eugene Higgins                    | Sonny Maynard   | Wilfred Saunders   | Myra and Van Williams                               | Cooling & Herbers, P.C. Attorneys-At-Law        |
| Mercedee and Melvin Chism                  | Nathan Hof                        | Monica McCaslin                                       | Dawn and John Sawle                                      | Charles Wittig                                      | Denise and Ronald Coppaken                      |
| Laura L. Church                            | Deborah L. Hogan                  | Lori McCutchen  | Karly Schmidt  | William Woodson                                     | Cosentino's Brookside Market                    |
| City Council of Kansas City, Missouri      | Katherine Hollar and Derek Prater | Wayne McFall  | Eric Schnyder  | Janet and James Zerbe                               | Cozad Company LLC                               |
| Mary Lynn and Gerald Clark                 | Eunice Holmes                     | Jennifer McGarry                                      | Martin Schwarzenberger and Leslie Champlin               | Zion Grove Baptist Church                           | Kathleen and Jon Cromer                         |
| The Classic Cookie & Cafe                  | Yvonne and James Houston, Jr.     | Avis D. McGary  | Colleen and Bradley Scott                                | Zona Rosa   | Janette and Hal Cross                           |
| The Classic Cup                            | Patricia and Robert Hovey         | Danny McGeorge  | Segway Experience of Kansas City                         | <b>Base Ball Donors</b>                             | CST Industries, Inc.                            |
| Lakeisha Clay                              | Darcy A. Howe                     | Jane and Robert McKim                                 | Serenity The Rejuvenating Day Spa, Inc.                  | 4 Hats Creative                                     | Victoria A. Cundiff                             |
| Traci Cole                                 | Larry Humes                       | Jeanne M. Meyer                                       | Roland Shelton   | Sheila and Vincent Abio                             | Dean Development Incorporated                   |
| Arlana Coleman                             | Shari Hunter                      | Clifford D. Middleton                                 | Susann and Wallace Shinkle                               | Theresa Adair                                       | Carole DeWald                                   |
| Commercial Lithographing Company           | Fred Huse                         | Donna Miller  | Betty and Robert Slegman                                 | AEG Kansas City                                     | Dick's Sporting Goods, Inc.                     |
| Arlyn G. Converse                          | Luevina Huskey                    | Susan and Doug Miller                                 |  |   |   |

Erika and David Dickey  
Monte Dinkel  
DST Systems, Inc.  
Melissa Eaton  
Beverly and Jim Edwards  
Jill and Galen Erickson  
Lezlie and Carl Falcone  
Faultless Starch-Bon Ami Company  
Karen A. Ferro  
The Fiddly Fig Legg Florist  
Fidelity Security Life Insurance Co.  
Debora Field and David Orlowski  
Loretta and John Fierro  
Fike Corporation  
Robert Firmhaber and Sally Groves  
Scott Fitzgerald  
Stephen Forsyth  
Mitzi and Mark Foster  
General Mills, Inc.  
Ann and Douglas Ghertner  
Betsy and Brian Glick  
Global Prairie  
Richard J. Goede  
Sara and Scott Goldstein  
Patricia and Dave Goodwin  
Arvin Gottlieb Charitable Foundation  
Sharon Greenwood  
Hair  
Lisa Hale  
Innes and John Hale  
Adele and Don Hall  
Brenda G. Hamilton  
Harley-Davidson Motor Co.  
Sylvia and Mike Haverty  
Joyce and Jack Hayhow  
Heavy Constructors Association of  
Greater Kansas City  
Judy and James Heeter  
Bush and Jamie Helzberg Fund  
Shirley and Barnett Helzberg Foundation  
Karen and Michael Herman  
Lisa Hill  
Katherine Hollar and Derek Prater  
Darcy A. Howe  
Hudson & Jane  
Bethany and Trey Humphrey  
Illusions Unlimited Productions, Inc.  
Jennifer and John Isenberg  
Jasper's Restaurant  
Ronald E. Jennings  
Ann and Brad Jerome  
Jerusalem Café and Bakery  
Victoria and Mike Kanaley  
Brandon Kane  
Kansas City Business Journal  
Kansas City Chiefs Football Club  
Kansas City Power & Light  
Kansas City Royals Baseball Club  
Kansas City University of Medicine  
and Biosciences

Kansas City, Missouri Parks & Recreation  
Julia Irene Kauffman  
Ewing Marion Kauffman Foundation  
Muriel McBrien Kauffman Foundation  
Ryan Keller  
Bill Koenigsdorf and Kay Johnson  
KPMG LLP  
Gayle and Bruce Krigel  
John Kurtz  
Lathrop & Gage, L.C.  
Jennifer and Chuck Laue  
David Lea Training, LLC  
Keith Leathers  
Les Bourgeois Vineyards  
Lewis, Rice & Fingersh  
Liberty Fruit Company, Inc.  
Loch Lloyd  
Lockton Companies, Inc.  
Leonard R. Louis  
Liz and Greg Maday  
Major Brands  
Margolis & Tisman LLP  
Marks Nelson Vohland Campbell &  
Radetic LLC  
John F. Marshall  
Master Pitching Machine Inc.  
McCormick & Schmick's Seafood Restaurant  
McCown Gordon Construction, LLC  
McDaniel Hazley Group, Inc  
Avis D. McGary  
Martha Jane and Ted McGrade  
McNearney & Associates, LLC.  
Jean and Brendan McPherson  
Tom Meier  
Microsoft  
Midwest Airlines  
Jon Miklos  
Milbank, Tweed, Hadley & McCloy LLP  
Mission Hills Country Club  
Kerry and James Moloney  
Lisa Monroe  
Karen and Olen Monsees  
Tina and Jeff Montgomery  
Morton's of Chicago  
The National II  
Natural Accents Distinctive Outdoor Lighting  
Negro Leagues Baseball Museum  
Catherine and Charles Newell  
James B. Nutter & Company  
Barbara and David Odegard  
Office of the City Manager  
Jan and Tom O'Rourke  
Outlaw Cigar Co.  
Outpost Worldwide  
Michelle Paige  
Janell L. Pallanich  
Cindy Parres  
Roshann Parris and Jeff Dobbs  
Party Personnel  
Preeta Patel

John Pecorella  
Michelle and Mitz Pellicciotta  
Margaret and Keith Pence  
Peterson Manufacturing Company  
Pizza Shoppe  
Katy and Joe Platt  
Polsinelli Shughart PC  
Elaine & Norman Polsky Donor Advised Fund  
Cappy and Peter Powell  
Scott B. Prater  
Jennifer and Ron Pressman  
Providence Medical Center  
RBI Rookie Division  
Ann and John Readey, III  
Ryan Reid  
Victoria and William Reiser  
Clay Remley  
Janet and Tom Renich  
Miranda Ritter  
The Roasterie, Inc.  
Roberts Dairy  
Charles R. Robinson  
Chuck Robinson  
Rockhill Tennis Club  
Alma and Marvin Rollison  
Leslie and Bren Rose  
Christina and Jason Roth  
Roxborough Pomerance & Nye, LLP  
Melissa and Matthew Rubel  
Salon Marc  
Salsman Caterers, Inc.  
Dawn and John Sawle  
Mary and Gary Schanzer  
Eric Schnyder  
Amber and Jay Seaton  
Seigfreid, Bingham, Levy, Selzer & Gee  
Shank & Hamilton  
Sheraton Hotel/Coco Key Water Resort  
Sheraton Overland Park  
Will Shields  
Shoe Girl Designs  
Shughart Thomson & Kilroy Foundation  
Ashley Smith  
Beth Smith  
Blake Smith  
Sole Patch Barbershop  
Gloria and Glenn Spencer  
SPIN Neapolitan Pizza  
Anthony L. Springfield  
Sprint Corporation  
St. James Winery  
State Street  
Megan Stock  
Rhonda and Mark Swade  
Swope Health Services  
Scott Tanguay  
Toni and John Thornton  
Torosian Foundation  
Treat America Food Services  
Trozzolo Communications Group

Truman Medical Centers Charitable  
Foundation  
Jill and Thomas Turner, III  
U.S. Engineering  
UMB Bank, n.a. Kansas City  
Unicorn Theatre  
University of Missouri Kansas City-Athletics  
Vino 100 - Kansas City  
VML Foundation  
Jean and Don Wagner  
Mary and Ron Pressman  
Catherine Wear  
Jane and Claude Webb  
Westport Flea Market  
Helen and Frank Wewers  
Gerald White and Cyprienne Simchowicz  
Teresa and Frank White, Jr.  
Willie Wilson  
Elizabeth and Doc Worley  
Nancy Yedlin  
Your Wellness Connection  
YRC Worldwide Inc.  
Bob Zeldin

#### Dreams to Reality Donors

Capital Steel Service, LLC  
Citigroup Business Services  
Mason L. Dean Trust  
Tammy and Larry Dickinson  
DST Systems, Inc.  
Becky and Pat Dunn  
J.E. Dunn Construction Group, Inc.  
Anne and Howard Elsberry  
Robert Firmhaber and Sally Groves  
Gail and Hires Gage  
The Goppert Foundation  
Hallmark Cards, Inc.  
Jill and James Kanatzar  
William T. Kemper Foundation  
J. Martin Kerr  
Locke Equipment Sales Co., Inc.  
Lynn Elliott Co. KC  
Ashley Smith  
Mary and Ron Pressman  
Lana Rainen-Yunker  
Lisa and Robert Rohlf  
Alma and Marvin Rollison  
Michelle and David Smith  
Victor E. Speas Foundation  
State Street  
Sturgeon Electric  
The Sunderland Foundation  
Vanguard Charitable Endowment Program  
Jean and Don Wagner

#### Endowment Donors

Olive Beaham Lansburgh and  
Larry Lansburgh

#### Fashion Show Donors

A Joy Event Planning, LLC  
Ashley Adorante  
ADW Solutions, LLS  
Linda R. Aks  
Alaskan Fur Company  
All Seasons Party & Tent Rental  
American Airlines  
Anonymous  
Board of Public Utilities  
Therese M. Bysel  
Irene Caudillo  
Chase Suites Hotel  
Children's Mercy Hospital  
Arlana Coleman  
Carolyn Davis  
Dillard's  
Doherty Ornamental Iron Inc.  
Flowers by La Flor Shoppee Inc.  
Hallmark Cards, Inc.  
Lauren E. Hays  
HMC Enterprise Corp.  
Deborah L. Hogan  
Hollywood Sound & Lights  
Eunice Holmes  
Luevina Huskey  
Harriett and Larry Johnson  
Kansas City Ballet  
Kansas City Kansas African American  
History Committee  
Kansas City Symphony  
Kansas City T-Bones Baseball Club, LLC  
Kansas City Zoo  
Kansas City, Kansas Community College  
Kansas Gas Service  
Marti E. Lamar  
Leavcon II, Inc. Concrete Construction  
Legends at Village West  
Legends 14 Theatre  
Joyce and Jack Letts  
Lewis Block & Supply Company  
Lexxi's Hair Salon  
Mad Jacks  
Magic Touch Cleaning, Inc.  
Men's Wearhouse  
The National Agricultural Center &  
Hall of Fame  
One Plus Printing Services  
Janice E. Owens  
Panera Bread  
Pleasant Green Baptist Church  
James Psaras  
John D. Rios  
Doris and Robin Royals  
Sam's Club  
Ellen and Alvin Samuel  
Tracy Satterfield  
Sellers & Marquis Roofing Company  
George J. Shaw Construction Co.  
Roland Shelton

Sisters Of Charity Of Leavenworth  
Health System  
Robbie and Randy Springs  
Stanford & Son's Comedy Club  
Water & Light Credit Union  
Western Fireproofing Company of  
Kansas, Inc.  
Roberta Whisonant  
Jason Williby  
Mark Winiarski  
Winkler's Diamonds  
Brenda and Albert Zaragoza

#### Honorarium Gifts

**Honoring Carrie and Bill Frazier**  
Marsha Parkinson

**Honoring Michael Herman**  
Herman Family Foundation

**Honoring Wendy Wilson**  
The Hartford

#### Kids Night Out Donors

24 Hour Fitness  
360 Architecture  
Accenture  
Jerry Adriano  
Advanced Financial Solutions, LLC  
Advanced Laser Tag  
Air Tran Airways  
Aixois  
Alcatel-Lucent Technologies  
Alexander Open Systems  
Alexandria's Place  
All Star Awards & Ad Specialties  
David Alpert  
Mithra Amanan  
Ambience Furs  
AMC Entertainment  
American Eagle Outfitters Foundation  
Andrews McMeel Universal Foundation  
Anonymous  
Aquila, Inc.  
Area Rug Dimensions  
Armani Exchange  
Martha Atlas  
Avatar Inc.  
B.S.C. Holding, Inc.  
Baby Cakes  
Bag & Baggage  
Jennifer and Jerry Bain  
Debby and Gary Ballard  
Balls Price Chopper Super Food  
Ann and James Balquist  
Bank Midwest, N.A.  
Bar Natasha  
Denny Barnett  
Leslie and Jeb Bayer, Jr.  
Beauty Brands

|   |   |   |   |                                 |  |
|---|---|---|---|---------------------------------|--|
| Bradley Belt                                    | Kira Crosland                           | Dana and Jason Grimsley                 | and Biosciences                           | Miriam Garvey                   | Janet and Tom Renich                       |
| Roy Ben-Aharon                                  | CST Industries, Inc.                    | James Grube                             | The Kansas City Wizards                   | Mission Bowl                    | Antonio Richardson                         |
| Grant Bendas                                    | Curious Sofa                            | Susie Haake                             | Kansas City Zoo                           | The Mixx                        | Cheryl and Joseph Rizk                     |
| Berbiglia Wine & Spirits                        | Ellen and Doug Dalzell                  | Jennifer Haile                          | Ewing Marion Kauffman Foundation          | Marian and James Monnig         | The Roasterie, Inc.                        |
| Rita and Irwin Blitt                            | Dave & Buster's, Inc.                   | Adele and Don Hall                      | Keller & Owens                            | Angela and Floyd Montgomery     | Julie and Randy Robinson                   |
| Brian C. Bloss                                  | Jill and Marshall Dean, Jr.             | Carlene and Bill Hall                   | Carla A. King                             | Wendell K. Moore                | Craig E. Rodgers                           |
| Blue Cross and Blue Shield of Kansas City       | DeBruce Companies                       | Hallmark Cards, Inc.                    | Renea and Chad Kirby                      | Pat Murphy                      | Kathleen and Robert Rogers                 |
| Bonefish Grill                                  | Denise and Donald Decelles              | Carol and Allan Hallquist               | Julia L. Klaas                            | Amy and Mike Naatz              | Lisa and Robert Rohlf                      |
| Berna and Dave Bourgoin                         | Delta Dental Plan of Kansas             | Halls Plaza                             | Lisa and Todd Kobayashi                   | The Nelson-Atkins Museum of Art | Julie and Mark Rome                        |
| Jeanene and James Brake                         | Kathy and David Disney                  | Erik Hansey                             | John Kowalski                             | Niemuth Design                  | Claude Roper, Jr.                          |
| Strand Brewer                                   | Doubletree Hotel                        | Harley-Davidson Motor Co.               | KPMG LLP                                  | Nigro Brothers Western Wear     | Roses Only Brand Roses                     |
| JoAnne and Chris Bridgnell                      | William H. Downey                       | Harold Pene's Man of Fashion            | Cherie and Christopher Kramer             | Leigh and Tyler Nottberg        | Susan and Charles Schmelzer, III           |
| Douglas S. Brown                                | Julie Drew                              | Harold's                                | Andrea and Joel Krasnow                   | Joseph M. Nuzum                 | Colleen and Bradley Scott                  |
| Jeanette and Richard Brown                      | DST Systems, Inc.                       | Jo-Ann Harris                           | Gayle and Bruce Krigel                    | Jan and Tom O'Rourke            | Segway Experience of Kansas City           |
| Kate and Peter Brown                            | Denise and Mark Dudenhoeffer            | Susan and John Harrison                 | Kuhn & Wittenborn Advertising, Inc.       | Joe Orth                        | Seigfreid, Bingham, Levy, Selzer & Gee     |
| Richard W. Brown                                | Becky and Pat Dunn                      | Joyce and Jack Hayhow                   | Helen and Robert Kuttles                  | Anita and Phil Otto             | Sellers & Marquis Roofing Company          |
| Rebecca and John K. Brungardt                   | J.E. Dunn Construction Group, Inc.      | Janis and Curt Heinz                    | Lamar's Donuts                            | Overland Limousine Service      | Serenity The Rejuvenating Day Spa, Inc.    |
| Shannon and Kevin Bryant                        | Diann and Bob Eber                      | Serri and Steven Helm                   | Mark Lambertz                             | Overland Park Marriott          | Kevin Shatzkamer                           |
| Amy Bucher Photographic Artist, Inc.            | EDS                                     | Shirley and Barnett Helzberg Foundation | Lansing Trade Group, LLC                  | Par Exsalonce Salon & Spa       | Sheridan Sechter & Associates              |
| Build-A-Bear Workshop                           | Susan P. Eikos                          | Hemline Women's Boutique                | Jeffrey T. Larison                        | Paradise Park                   | Shoe Girl Designs                          |
| Jackie and Andrew Burczyk                       | Stephen Elliott                         | Betty Henson                            | Lisa and Paul Lattan                      | Park Place Gallery              | Shop Beautiful                             |
| Burns & McDonnell Construction Group            | EMBARQ                                  | Melanie Hepperly                        | JoJanet and Jack Lausterer                | Shere Parker                    | Shughart Thomson & Kilroy Foundation       |
| California Closets                              | Linda Endecott                          | Daniel Hesse and Diane Canaday          | Le Fou Frog                               | Parris Communications Inc.      | Silpada Designs Jewelry                    |
| The Candy Store                                 | Entercom Kansas City                    | Hilton President Hotel                  | Leadership Advocates Network              | Vallerie Parrish-Porter         | Sioux Chief Manufacturing Co., Inc.        |
| The Capital Grille                              | Ernst & Young LLP                       | Nathan Hof                              | Leawood Fine Arts                         | Michelle and Mitz Pellicciotta  | Angela Skinner                             |
| LeAnn Carlton                                   | George Euber                            | Sharon and John Hoffman                 | Lee Jeans                                 | Margaret and Keith Pence        | Brenda and Scott Slabotsky                 |
| Carrabba's Italian Grill                        | Family Tree Nursery                     | Holiday Inn Hotel & Suites              | Legends 14 Theatre                        | Kristie Peppenhorst             | Jean Sloboda                               |
| Diana and Joe Carter                            | Holly Farkes                            | Jennifer and Shawn Hopkins              | Ron Lentz                                 | Pepsi Americas                  | Linda and Gregory Smart                    |
| Carter Broadcast Group                          | Faultless Starch-Bon Ami Company        | Hudson & Jane                           | Les Bourgeois Vineyards                   | Peter's Clothiers               | Beth Smith                                 |
| The Joseph & Diana Carter Foundation            | Brandon Fergerson                       | Shari Hunter                            | Loyde and Jack Letts                      | Karen Pinks                     | Michelle and David Smith                   |
| Charitable Trust                                | The Fiddly Fig Legg Florist             | Jamie Hurt                              | Lidia's/Cody Hogan                        | Polsinelli Shughart PC          | The Sosland Foundation                     |
| Jane Casburn                                    | Robert Firnhaber and Sally Groves       | Husch Blackwell Sanders LLP             | Candis and Mike Lochmann                  | SPIN Neapolitan Pizza           | Southmoreland on the Plaza                 |
| CBIZ & Mayer Hoffman McCann P.C.                | Maria and James Fiscella                | Hyatt Regency Crown Center              | Lockton Companies, Inc.                   | Sprint Corporation              | Southwest Airlines                         |
| Cerner Corporation                              | Michael Fisher                          | Ice Midwest                             | Christina Lomas                           | Sprint Foundation               | SPIN Neapolitan Pizza                      |
| The Cheesecake Factory                          | Fishnet Security                        | The Image Group/Scott Robben            | Lon Lane's Inspired Occasions             | Susan Stanton                   | Sprint Corporation                         |
| Susan and Michael Chesser                       | Fitness Together                        | The Improv Comedy Club                  | The Historic Loose Mansion                | Starker's Reserve Restaurant    | Sprint Foundation                          |
| Chipotle  | Fleishman-Hillard, Inc.                 | Ingenuity Salon                         | Lyric Opera of Kansas City                | Starlight Theatre               | Susan Stanton                              |
| Maggi and Paul Choplin                          | Arturo Flores                           | Irish Crystal Company                   | M&I Bank                                  | State Street                    | Starker's Reserve Restaurant               |
| Churchill                                       | Amy and John Foley                      | Stacy Jackson                           | Alfie A. Mahmoud                          | Statements                      | Starlight Theatre                          |
| Elizabeth and Todd Cione                        | Folly Theater                           | Mary Lou Jacoby                         | Maid in Kansas City                       | Robert E. Stephens              | State Street                               |
| Cisco   | Sherry and Gary Forsee                  | Jaegers Paintball                       | Peter Mallouk                             | Tricia and Paul Stephens        | Statements                                 |
| Citi Cards                                      | Fox 4                                   | Jaegerz Laser Tag                       | Thomas D. Mangelsen Inc./Images of Nature | Jackie Stowell                  | Robert E. Stephens                         |
| Barbara and Barkley Clark                       | Free Country Design & Construction, Inc | Jerry's Sport Shop                      | Manny's Restaurant                        | Jeannine Strandjord             | The Procter & Gamble Manufacturing Company |
| The Classic Cookie & Caf                        | Charlyn and Vernon Fries                | Amanda E. Jirak                         | Tony Marengo                              | Jeannine Strandjord             | Provitivi Inc.                             |
| The Classic Cup                                 | JoAnne and Daniel Gabbert               | Johnny's Tavern                         | MarketSphere Consulting, LLC              | Strauss Peyton Portraiture      | Providence Medical Center                  |
| Michael Clooney                                 | Derek Gamble                            | Joslin's Jewelry                        | Maurices                                  | Style & Grace                   | PRP International                          |
| Darcy and Byron Clymer                          | John Garcia                             | Amy and Jeff Jurgensmeyer               | Mazuma Credit Union                       | Superlatives                    | Pryde's Old Westport                       |
| The Coca-Cola Bottling Co. of Mid-America, Inc. | GARMIN International, Inc.              | Rick Justis                             | John D. McAnulty                          | Swope Health Services           | Caroline and John McCallister              |
| Wilma Collado and Jim Walsh                     | General Mills, Inc.                     | K.C. Hopps, Ltd.                        | McCown Gordon Construction, LLC           | Linda and Thomas Talbott        | Angela and Roger McCoy                     |
| Collective Brands                               | Patty and Mark Gilgus                   | Michele and Lee Kaiser                  | Angela and Roger McCoy                    | Scott Tanguay                   | Lori McCutchen                             |
| ComedyCity                                      | Kimberly Gilmore                        | Kansas City Ballet                      | Rainbow Car Wash                          | William Taylor                  | Christine and Steve McDaniel               |
| Commerce Bank, N.A.                             | Dub Giltner                             | Kansas City Business Journal            | Jessica and Matthew Ralston               | Heather and Anthony Thill       | Judi and Thomas McEvoy                     |
| Controlled Environment Products, Inc.           | Rob Givens                              | Kansas City Chiefs Football Club        | Jan and John Randle                       | Sharon Thum                     | Men's Wearhouse                            |
| Martha and Mark Cornwell                        | Carol and Bill Golden                   | Kansas City Power & Light               | The Raphael Hotel Group                   | Debra Tickle                    | Microsoft                                  |
| Cosentino's Brookside Market                    | Janie and Thomas Grant                  | Kansas City Repertory Theatre           | RED Development, LLC                      | Tiffany Greens Golf Club        | Midwest Airlines                           |
| The Coterie Theatre                             | William T. & Frances Grant Foundation   | Kansas City Southern                    | Karen and David Redlich                   | Timex Corporation               | Midwest Consulting Group, Inc.             |
| Tara and Craig Cowden                           | Andrew W. Gray                          | The Kansas City Star                    | Darcie Reifschneider                      | Tivol, Inc.                     | Karen and David Redlich                    |
| Crate & Barrel                                  | Samantha and Michael Greene             | Kansas City Symphony                    | Mary and Stephen Reintjes                 | Tivoli Cinemas                  | Darcie Reifschneider                       |
| Emily and Tom Cray                              | The Greensman, Inc.                     | Kansas City T-Bones Baseball Club, LLC  | Robert E. Miller Insurance Agency         |                                 | Karen and Sean Miller                      |
|   | Randy Griffin                           | Kansas City University of Medicine      |   |                                 | Robert E. Miller Insurance Agency          |

Tom James of Kansas City  
 Toner Jewelry  
 Too Cool T-Shirt Quilts  
 Tower Dry Cleaners  
 Town Center Plaza  
 Trabon Printing  
 Harry S. Truman Library & Museum  
 Jill and Thomas Turner, III  
 U.S. Engineering  
 UBS Financial Services  
 UGG Australia  
 UMB Bank, n.a. Kansas City  
 Unicorn Theatre  
 University of Missouri Kansas City  
 Susan M. Uppman  
 Kim and J. Verhoeven  
 Patricia and John Vertreese  
 Aimee Vessell  
 Michael Volk  
 Jean and Don Wagner  
 Tammie Wahaus  
 Waterway Carwash  
 Rebecca and Vincent Watson  
 Cindy Weiner  
 Wellness Consumer Builders  
 Mary and Richard Wetzel  
 Brian Wietharn  
 Cati Winkel  
 David Wolf  
 Wonderscope Children's Museum of  
 Kansas City  
 Worlds of Fun  
 YRC Worldwide Inc.  
 Karen and Mark Zecy  
 Zona Rosa

**Memorial Gifts**

**In Memory of Dess L. Caylor**  
 The Dess L. Caylor Charitable Trust

**In Memory of Mbembe Milton Smith**  
 Samella Gates

**In Memory of Mary Trahan**  
 John Baker  
 Central High School Mathematics  
 Department  
 John Daugherty  
 Golden Link Rebekah Lodge #677  
 Jon Jacobs  
 Jeanne Meyer

**Radiothon Donors**

Ben Aken  
 Meghan and Kevin Alderson  
 David Ammon  
 Anonymous  
 Argosy Casino  
 Leslie and Jeb Bayer, Jr.  
 Nancy and Gregory Bentz

Big Shot Interactive Integrated Marketing  
 Patrick C. Brennan  
 Jackie and Andrew Burczyk  
 Greg Butell  
 Jeannine and Shawn Campbell  
 Keri and Tony Carbajo  
 CBIZ & Mayer Hoffman McCann P.C.  
 Shelley Cesar  
 Children's Mercy Family Health Partners  
 Children's Mercy Hospital  
 Traci Cole  
 Arlyn G. Converse  
 Brett J. Darby  
 Donald Demoney  
 Kerry and Phil Dixon  
 Becky and Pat Dunn  
 Roger Eason  
 Brandon Ferguson  
 James R. Gulick  
 Abby and Steve Haden  
 Harley-Davidson Motor Co.  
 Larry Humes  
 JMW  
 Kansas City Power & Light  
 Kansas City Royals Baseball Club  
 The Kansas City Wizards  
 Kansas City, Missouri Parks & Recreation  
 Adam Kujawa  
 Lansing Trade Group, LLC  
 Michael Lewis  
 Janice A. Mackey  
 Mancuso Construction  
 Mariner Wealth Advisors  
 Lorene and John Massa  
 Monica McCaslin  
 John McGee  
 Jeff Moreno  
 Jay L. Moses  
 Jackie and Charles Muff  
 Negro Leagues Baseball Museum  
 Pendleton Enterprise LLC  
 Pepsi Americas  
 RED Development, LLC  
 Antonio Richardson  
 Janice and Jim Rose  
 Brian Sandridge  
 Martin Schwarzenberger and Leslie  
 Champlin  
 Scott Fitness  
 Lynn and Steve Sestak  
 Sports Radio 810 WHB  
 Sprint Corporation  
 Jill Stever  
 University of Kansas Athletic Department  
 Vintage Sports  
 Natalie Vizcarra  
 Cindy Weiner  
 Teresa and Frank White, Jr.  
 YRC Worldwide Inc.

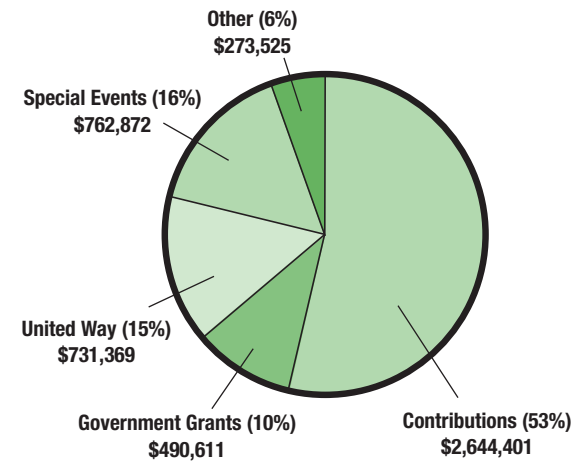
**RBI Donors**

Allied Construction Services, Inc.  
 Andrews McMeel Universal Foundation  
 Anonymous  
 Mary and Alan Atterbury  
 Avatar Inc.  
 Bank Midwest, N.A.  
 Robert M. Barnes  
 The Baseball Tomorrow Fund  
 The George K. Baum Foundation  
 Robert Beachy  
 Benjamin & Loss, P.C.  
 Irene Bettinger  
 Phyllis J. Brinkerhoff  
 Kay and John Callison  
 The Joseph & Diana Carter Foundation  
 Charitable Trust  
 Central Bank of Kansas City  
 City of Independence, Missouri  
 Cloud L. Cray Foundation  
 CST Industries, Inc.  
 Design Resources, Inc.  
 Raymond Doswell  
 Double N T-Shirts & More  
 Larry Downey  
 Liza and Ben Edwards  
 Enterprise Leasing Company of Kansas  
 Executive Hills, Inc.  
 Everett Gardner  
 Patrick Geschwind & Associates  
 Giltner & Sons, LLC  
 Global Prairie  
 Grandbridge Real Estate Capital, LLC  
 Laura Greenbaum  
 Carol and Michael Grimaldi  
 Paula and Casey Halsey  
 Joyce and Jack Hayhow  
 Heavy Constructors Association of  
 Greater Kansas City  
 Judy and James Heeter  
 Hickman Mills C-1 School District  
 Sharon and John Hoffman  
 Patricia and Robert Hovey  
 Jerry's Sport Shop  
 Jones Development Company, L.L.C.  
 Kansas City Business Journal  
 Ewing Marion Kauffman Foundation  
 Kingston Environmental Services  
 Kissick Construction Co., Inc.  
 Gayle and Bruce Krigel  
 Susan and Scott Krigel  
 Law Offices of Krigel & Krigel  
 Lockton Companies, Inc.  
 Jean M. Loesch and Tyrone O. Brown  
 Rodney Longhofer  
 Sonny Maynard  
 McCown Gordon Construction, LLC  
 Danny McGeorge  
 Jane and Robert McKim  
 Clifford D. Middleton

Frances and Don Motley, Sr.  
 James B. Nutter & Company  
 Oddo Development Company, Inc.  
 PAL  
 Margo and Joe Posnanski  
 Yvette Rayos-Hernandez  
 Page and Bruce Reed  
 Caroline and Daniel Saferstein  
 Wilfred Saunders  
 Victor E. and Carolyn E. Schutte Foundation  
 Servant Christian Community Foundation  
 Anna and DeMorris Smith  
 Michelle and David Smith  
 John Snyder  
 Sonnenschein Nath & Rosenthal  
 Sports Image Group Legends Photography  
 State Street  
 Ward D. Stauffer  
 Ronald Stevenson  
 Stinson Morrison Hecker LLP  
 Strickland Construction Company  
 Teva Neuroscience, Inc.  
 Mary Jean and William Thomas  
 Justina and Donald Thompson  
 Eden and David Thorne  
 Tower Properties Co.  
 Truman Medical Centers Charitable  
 Foundation  
 Jill and Thomas Turner, III  
 Turner Family Foundation  
 Union Pacific Railroad  
 Katie Van Luchene  
 The Don and Jean Wagner Charitable  
 Foundation  
 Susan and Chris Wally  
 Elizabeth A. Watkins  
 Willard Family Foundation  
 Van Wolbach  
 Toma and Andrew Wolff

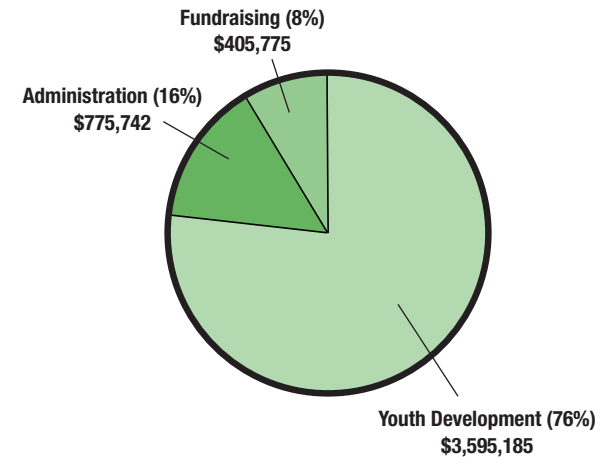
*Every attempt is made to ensure the accuracy of the donor listings. If we have incorrectly listed your name or inadvertently omitted it, please contact the Development Office at (816) 361-3600.*

**2008 Operating Support and Revenue**  
**\$4,902,778\***



\*Per GAP requirements, 2008 Support & Revenue include pledges for future years.

**2008 Operating Expenses**  
**\$4,842,279\*\***



\*\*Excluding depreciation.





## Our mission

The mission of the Boys & Girls Clubs of Greater Kansas City is to promote the development of self-esteem, values and skills for boys and girls, ages 5-18, with special emphasis on youth from disadvantaged circumstances.

## Board of Directors

John Rose, Chairman

Jeb Bayer

Robert Beaham

Andrew Burczyk

Robert D. Firnhaber

Janie Grant

Gayle Krigel

Jean Loesch

John Lowry

Mike Naatz

Roshann Parris

Keith Pence

Cappy Powell

Ralph Reid

Tony Richardson

Robert M. Rohlf

Marvin Rollison

James Rose

Steve Sestak

Marty Stanley

Jo Stueve

Scott Tanguay

Mike Torti

Marilyn Townsend

Cindy Weiner

## Ex Officio Members

Sue Laird

Fred Mills

David A. Smith

Tom Turner

*This annual report is published by The Boys & Girls Clubs of Greater Kansas City. All comments regarding the publication should be directed to the editor at the Administrative Office, 6301 Rockhill Road, Suite 303, Kansas City, MO 64131 or 816-361-3600.*

*Design by Dawn Allman*



**BOYS & GIRLS CLUBS**  
OF GREATER KANSAS CITY

6301 Rockhill Road, Suite 303  
Kansas City, MO 64131

[www.helpKCKids.org](http://www.helpKCKids.org)

NONPROFIT ORG.  
U.S. POSTAGE  
**PAID**  
KANSAS CITY, MO  
PERMIT NO. 6334

